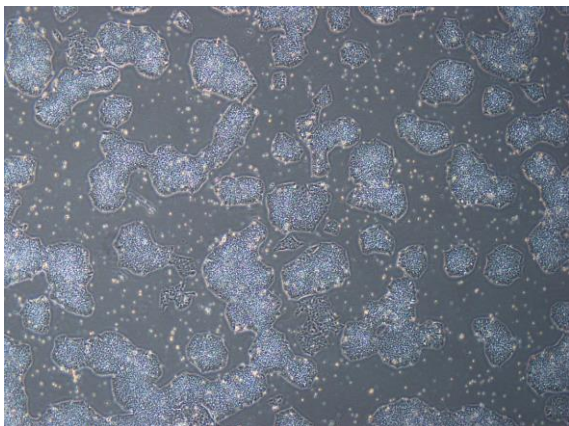
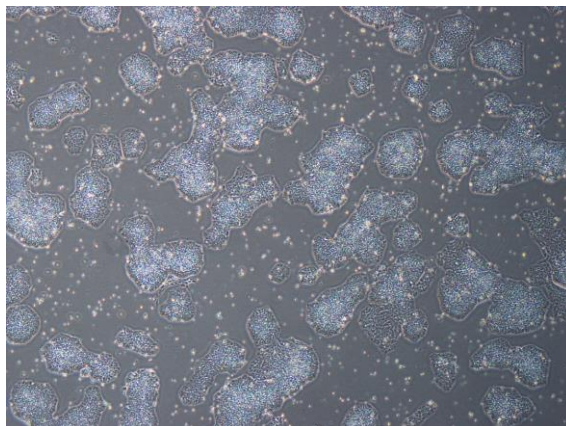


## 【 CiRA-j-1585 】 Morphology of iPSC colonies

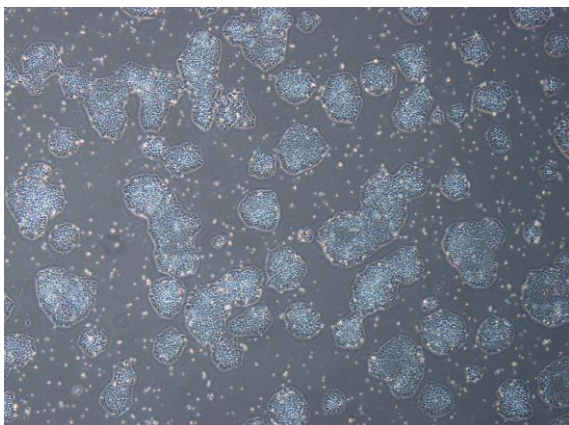
CiRA-j-1585-A: passage-3



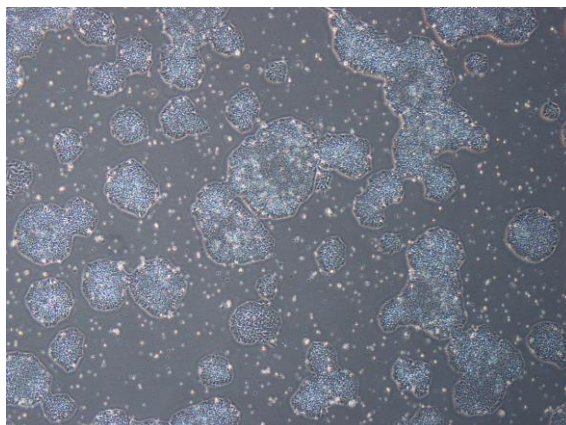
CiRA-j-1585-B: passage-3



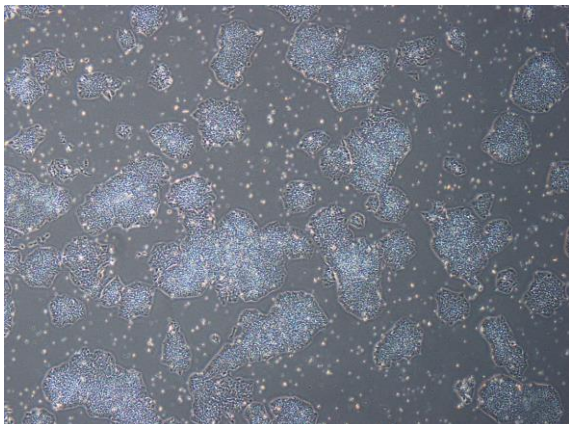
CiRA-j-1585-C: passage-3



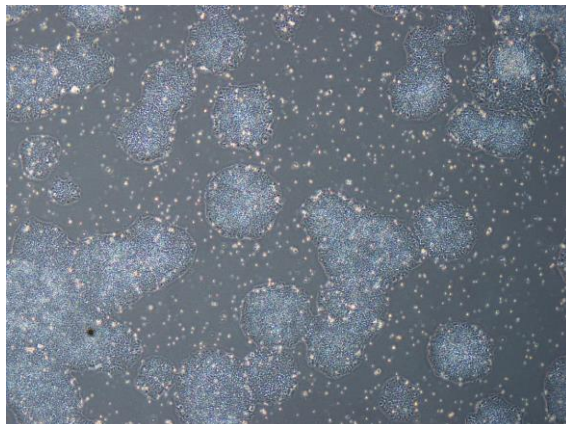
CiRA-j-1585-D: passage-3



CiRA-j-1585-E: passage-3



CiRA-j-1585-F: passage-3



( All images were captured at 4x magnification )